



TRL's vision is *"Clean, efficient transport that is safe, reliable and accessible for everyone"*

*Naomi Barringer*  
*Director, Human Resources*

# 90 years of impactful innovation

1933  
Road Research  
Laboratory  
established



1950's/70's  
The UK Motorway  
network



1997  
NCAP launched



2015  
Gateway  
driverless  
shuttles



2020  
London Smart  
Mobility Living Lab



2021  
HGV Truck  
Platooning  
(HelmUK)



1979  
SCOOT



1949  
Zebra crossing



1996  
TRL privatized as  
social enterprise



2012  
London Summer  
Olympics



2016  
Electric double  
decker bus



2020  
General Safety  
Regulations



2022  
Micro-mobility  
safety



## Operations/Delivery

- Researchers
- Consultants
- Scientists
- Engineers
- Collision Investigation
- HGV Driver/Technicians
- Data Analysts/Statisticians
- Project Managers
- Software Developers/QA
- Apprentice and graduate roles

## Corporate Functions

- Human Resources
- Finance
- IT
- Marketing
- Sales
- Administration

## Their specialisms

- SCOOT (Split Cycle & Offset Optimisation Technique)
- MOVA (Microprocessor Optimised Vehicle Actuation)
- iMAAP
  - Road Safety
- Behavioural Science & Human Factors



# Consultants, Researchers, Engineers, Scientists

## Their specialisms

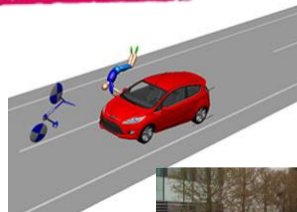
- Vehicle Design & Regulation Incl. Safety & Emissions

- Euro NCAP
- Emissions



- Expert Witness and Investigations Services

- Collision investigation & reconstructions
- RAIDS (Road Accident In-Depth Studies)
- Highways investigations



# Consultants, Researchers, Engineers, Scientists

## Their specialisms

- Testing & Evaluation of Technologies, Vehicles & Services
  - Electric Vehicles
  - E-scooters
- Connected and Automated vehicles
  - HGV platooning
  - Autonomous vehicles





An aerial photograph of a city street intersection. The street is paved with asphalt and features several white-painted crosswalks. Several pedestrians are visible, walking across the crosswalks. A large, semi-transparent orange rectangle is overlaid on the center of the image, partially obscuring the street and the pedestrians. The word "Questions?" is written in white, sans-serif font across the orange rectangle. In the bottom left corner, there is a small orange vertical bar. In the bottom right corner, there are two horizontal bars, one blue and one orange, and a dark blue vertical bar.

# Questions?

First driverless car – What year?

